



Rail jack acc. to DIN 7355
model RSJ

High stability on uneven ground is ensured by the extra large floor plate (e.g. gravel).



Steel jack acc. to DIN 7355 model SJ

Capacity 1500 - 10000 kg

Mechanical steel jacks can basically be used to lift almost all kinds of loads in maintenance and repair, ship building, construction as well as agriculture.

Features

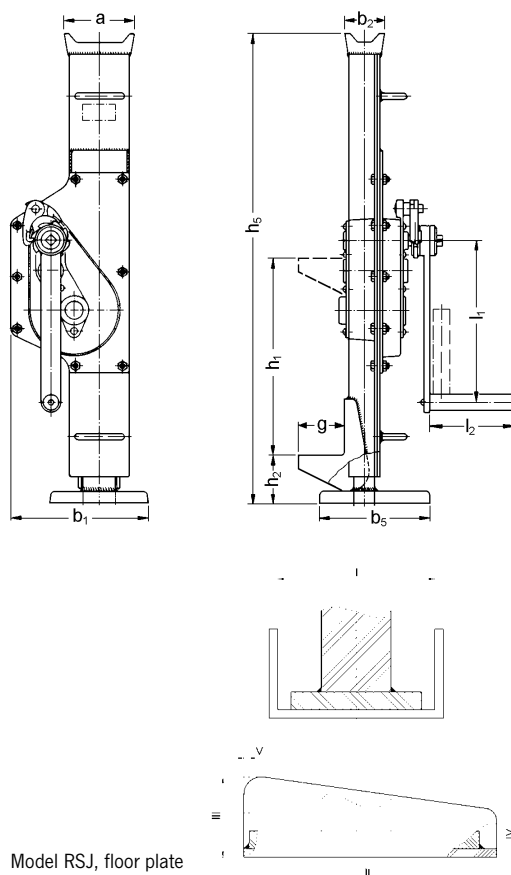
- The precisely machined gear box with optimal gear ratio ensures a minimum of effort and smooth operation.
- The load can be positioned either on the head or the claw.
- By turning the operating lever the jack moves smoothly and conveniently up and down along the rack.
- The self-locking, anti-kickback operating lever reduces the risk of injuries. The handle can be tilted for use in confined spaces.
- The load is held securely in any position. Inside the load brake the axial brake pressure is generated by the load itself, thus, it is proportional to the size of the load.
- No reduction of capacity on the claw.

Technical data model SJ and model RSJ

Model	EAN-No. 4025092*	Capacity kg	Height h5 mm	Lifting height h1 mm	Hand effort at WLL daN	Weight kg
SJ 15	*080897	1500	725	360	28	17
SJ 30	*079877	3000	735	360	28	20
SJ 50	*079884	5000	730	350	28	27
SJ 100	*080903	10000	800	410	56	43
RSJ 50	*039482	5000	740	360	28	29

Dimensions model SJ and model RSJ

Model	SJ 15	SJ 30	SJ 50	SJ 100	RSJ 50
a, mm	76	83	108	124	108
b1, mm	164	200	190	252	190
b2, mm	38	38	52	65	52
b5, mm	140	140	170	170	170
g, mm	60	65	71	86	71
h1, mm	360	360	350	410	350
h2, mm	70	70	80	85	80
h5, mm	725	735	730	800	740
l1, mm	225	249	275	300	275
l2, mm	113	128	128	250	128
I	-	-	-	-	180
II	-	-	-	-	250
III	-	-	-	-	70
IV	-	-	-	-	45
V	-	-	-	-	10



Model RSJ, floor plate